



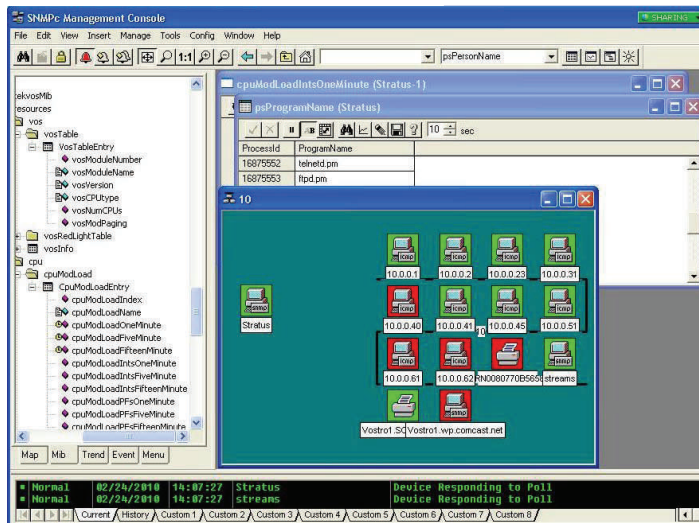
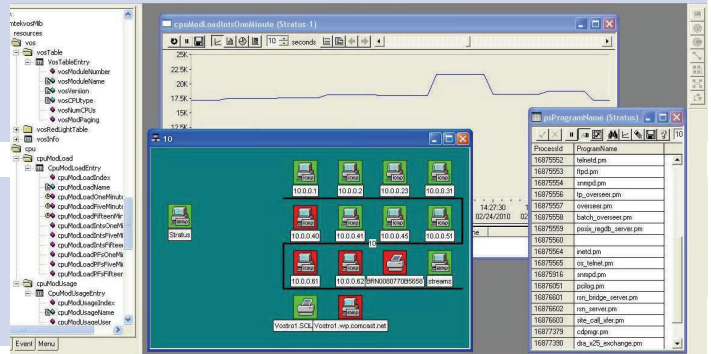
COMTEK /VOS — SNMPc Integration Sheet

Monitor Stratus VOS with SNMPc

Your Network and Computers are Mission Critical. Your business depends on its Networks and Servers. Not only are IP networks carrying core business transactions, they are increasingly being used to monitor the performance of remote servers. Without properly functioning servers, you may not be able to conduct business at all. Comtek /VOS allows your SNMPc installation to monitor your Stratus VOS computers anywhere in the world!

SNMPc Monitors Networks and Servers

SNMPc is a multi-vendor network management system (NMS) capable of monitoring the complete infrastructure of your company. Thousands of installations worldwide attest to the effectiveness of SNMPc. Easy to install, configure and use. SNMPc provides the tools necessary for proactive measures to be taken before users are impacted.



Monitor Stratus VOS with SNMPc

COMTEK /VOS monitors the Stratus VOS systems applications and hardware, and makes this information available to the network management system. In addition, COMTEK /VOS detects user specified mission critical processes or programs that are not active. COMTEK /VOS is capable of tracking multiple instances of a process or program and sending traps when the actual number of instances drops below the user specified minimum. COMTEK /VOS is able to monitor VOS Log Files. Any number of files may be monitored. The COMTEK Monitor Log file feature gives the user a convenient method sending important messages to the Manager immediately.

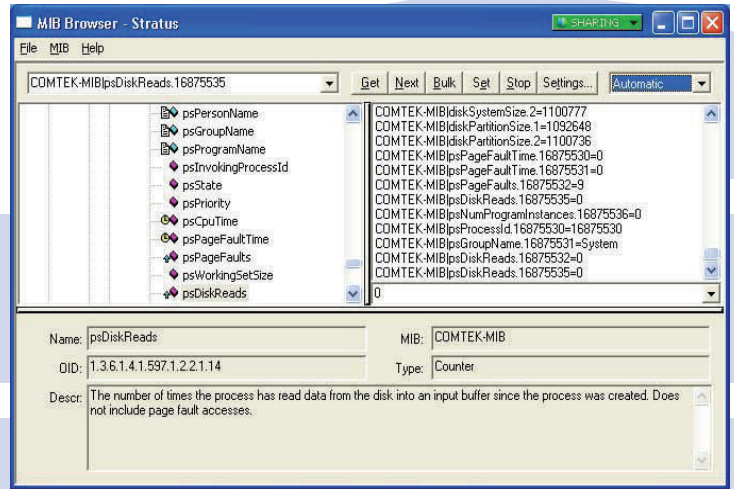
COMTEK /VOS and SNMPc

COMTEK /VOS is an application that resides on Stratus VOS systems. COMTEK /VOS monitors important factors about the Stratus VOS, and makes this information available when polled by SNMPc. In addition, COMTEK /VOS sends alerts (called traps) when critical thresholds such as disk nearly full are exceeded.



COMTEK /VOS Alerts (TRAPS)

- ◆ Critical Process Missing
- ◆ Excessive CPU Utilization
- ◆ Excessive Interrupt Utilization
- ◆ Disk Full / Clear
- ◆ Log Message
- ◆ Page Full
- ◆ User Defined Message
- ◆ Red Light Event
- ◆ Authentication Failure
- ◆ Cold Start



COMTEK /VOS MIB Items

System Information:

- ⇒ Name / OID • Modules • VOS Version • Number of CPU's • Up Time

MIB II Information:

- ⇒ Packets In • Packets Out • Bad Values • Gets / Get Nexts • Parse Errors

CPU Information:

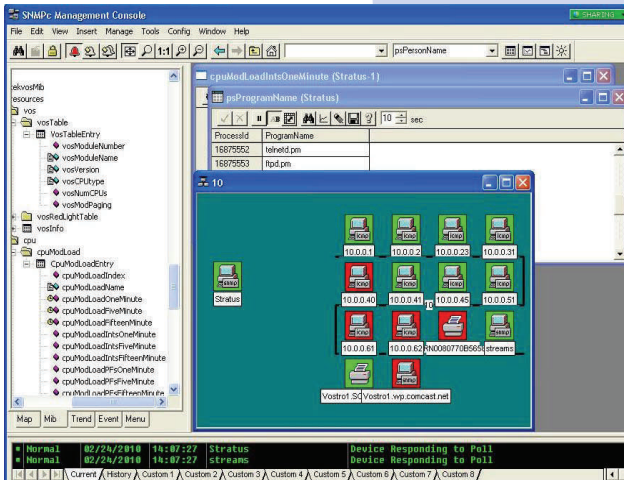
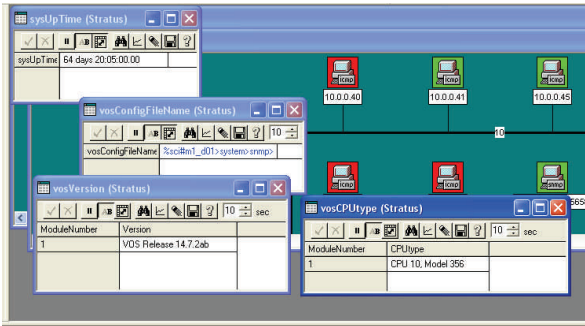
- ⇒ Module Load 1 Min • Module Load 5 Min • Module Load 15 Min • Module Load • Interrupts 1, 5, 15 Min • Mod Usage User • Mod Usage System • Mod Usage Interrupts • Mod Usage Idle

Disk Information:

- ⇒ How Many Disks • Disk System Name • Disk Partition Size • Disk Partition Used • Disk System Reads/Writes • Disk Partition Free

Process Information:

- ⇒ Number Processes • Process Name • Person Name • CPU Time • Page Faults • Disk Reads/Writes • Num Instances • Invoking Process ID



© Copyright 2010 COMTEK Services, LLC. The information contained herein is subject to change without notice. Nothing herein should be construed as constituting an additional warranty. COMTEK shall not be liable for technical or editorial errors or omissions.

COMTEK Services is a software company specializing in Remote Server Monitoring via SNMP.

COMTEK has been providing SNMP products to the Telecom, Banking, Stock Exchange, Investment, Finance, Food and Pharmaceutical industries since 1998. COMTEK products are monitoring thousands of computers in Africa, Asia, Australia, Europe, and the Americas. COMTEK facilities are located in Texas, New Hampshire, North Carolina, and Virginia. Support is provided worldwide. NMServer, COMTEK, and COMTEK /VOS are trademarks of COMTEK Services, LLC. IBM, HP, Mercury, Tivoli, SiteScope, Stratus VOS, Compuware, OpenView, Vantage, Orion, and SNMPc may be trademarks of their respective companies.



COMTEK Services, LLC • Phone: (603) 881-9556
Nashua New Hampshire • Fax: (603) 881-5504
<http://www.COMTEKSERVICES.com>